

Stakeholder Communications and Engagement Plan

Eel River Valley Groundwater Basin

Humboldt County, California

December 2020



Humboldt County Groundwater Sustainability Agency

1106 Second Street, Eureka, CA 95501

707.445.7741

Contents

| | |
|--|----|
| SGMA OVERVIEW | 3 |
| I. DESCRIPTION AND BACKGROUND OF THE EEL RIVER VALLEY BASIN | 5 |
| BASIN DESCRIPTION AND BOUNDARY | 5 |
| BASIN BACKGROUND | 9 |
| BASIN GOVERNANCE AND DECISION-MAKING PROCESS..... | 10 |
| II. COMMUNICATION OBJECTIVES TO SUPPORT THE GSP | 11 |
| III. EEL RIVER GROUNDWATER BASIN STAKEHOLDERS..... | 13 |
| BENEFICIAL USERS OF GROUNDWATER | 13 |
| IDENTIFICATION OF STAKEHOLDER ISSUES AND INTERESTS | 14 |
| IV. METHODS FOR PUBLIC NOTIFICATION, EDUCATION, AND ENGAGEMENT..... | 15 |
| STAKEHOLDER SURVEY AND MAPPING | 17 |
| V. IMPLEMENTATION TIMELINE | 18 |
| VI. EVALUATION AND ASSESSMENT | 20 |
| MILESTONE REVIEW | 20 |
| APPENDICES | |
| APPENDIX A: STAKEHOLDER ENGAGEMENT REQUIREMENTS BY PHASE | 22 |
| APPENDIX B: INTERESTED PERSONS LIST..... | 23 |
| APPENDIX C: PRELIMINARY GROUNDWATER WORKING GROUP/GROUNDWATER RESOURCES ADVISORY COMMITTEE MEETING SCHEDULE | 28 |
| APPENDIX D: DWR STAKEHOLDER SURVEY FORM..... | 29 |
| APPENDIX E: STAKEHOLDER MEETING EVALUATION FORM..... | 30 |
| APPENDIX F: STAKEHOLDER OUTREACH TRACKING AND DOCUMENTATION TOOL | 32 |

LIST OF FIGURES

1. Eel River Valley Groundwater Basin Image
2. Eel River Watershed Image
3. Image showing the five Economically Distressed Areas in the Eel River Valley basin, February 14, 2020

LIST OF TABLES

1. Consideration of various interest and examples of stakeholder groups within each of these categories
2. Median household income (MHI) and population for each EDA
3. Notification, Education, and Engagement Meetings and Media

ACRONYMS AND ABBREVIATIONS

| | |
|---------------------|---|
| BOS | Humboldt County Board of Supervisors |
| DAC | Disadvantaged Community |
| DWR | California Department of Water Resources |
| EDAs | Economically Distressed Areas |
| ERGWG | Eel River Groundwater Working Group |
| GRAC | Groundwater Resources Advisory Committee |
| GSA | Groundwater Sustainability Agency |
| GSP | Groundwater Sustainability Plan |
| HCDPW | Humboldt County Department of Public Works |
| Humboldt County GSA | Humboldt County Groundwater Sustainability Agency |
| SGMA | Sustainable Groundwater Management Act |

SGMA Overview

The **Sustainable Groundwater Management Act (SGMA)** was signed into law by California Governor Jerry Brown in 2014 (Water Code 10720 through 10737.8). SGMA provides local agencies with the framework to manage groundwater basins in a sustainable manner. The legislation recognizes that groundwater is most effectively managed at the local level and requires local agencies to achieve groundwater sustainability within 20 years of submitting a **Groundwater Sustainability Plan (GSP)**. GSP's are required for groundwater basins designated as medium- or high-priority.

In SGMA, sustainable groundwater management is defined as management of groundwater supplies in a manner that can be maintained in planning and implementation phases without causing undesirable results. Undesirable results are significant and unreasonable effects from the following six conditions: chronic lowering of groundwater levels, reduction of groundwater storage, seawater intrusion, degraded water quality, land subsidence, and depletion of interconnected surface waters.

SGMA and its GSP Emergency Regulations (California Code of Regulations, Title 23, Sections 350 through 358.6) established requirements related to stakeholder engagement during GSP preparation and of documentation requirements within the GSP. These requirements include:

- *SGMA (Section 10723.2) mandates all interests of all beneficial uses and users of groundwater be considered: The groundwater sustainability agency shall consider the interests of all beneficial uses and users of groundwater, as well as those responsible for implementing groundwater sustainability plans. The interests are represented by Agriculture Users; Domestic Well Owners; Municipal Well Operators; Public Water Systems; Local Land Use Planning Agencies; Environmental Users of Groundwater; Surface Water Users; Federal Government; California Native American Tribes; Disadvantaged Communities; Entities monitoring and reporting groundwater elevations in all or part of a groundwater basin.*
- *SGMA (Section 10723.4) requires the maintenance of an interested persons list: The groundwater sustainability agency shall establish and maintain a list of persons interested in receiving notices regarding plan preparation, meeting announcements, and availability of draft plans, maps, and other relevant documents. Any person may request, in writing, to be placed on the list of interested persons.*
- *SGMA GSP Emergency Regulations (Section 354.10) set forth notification requirements as follows: Each Plan shall include a summary of information relating to notification and communication by the Agency with other agencies and interested parties. DWR has prepared a Guidance Document for Groundwater Sustainability Plan Stakeholder Communication and Engagement (DWR Guidance Document, January 2018. <https://water.ca.gov/Programs/Groundwater-Management/Assistance-and-Engagement>)*

A summary of SGMA engagement and notification requirements for all phases of SGMA as presented in the [Guidance Document for Groundwater Sustainability Plans](#) are shown in **Appendix A**. To assist **Groundwater Sustainability Agencies (GSA)** in identifying stakeholders that reflect diverse social, cultural and economic elements of the population, the **California Department of Water Resources (DWR)** Guidance Document provides a Stakeholder Engagement Chart that lists various interest and examples of stakeholder groups within each of these categories. This chart is shown below as **Table 1**. For purposes of this Stakeholder Communications and Engagement Plan, Beneficial Users and interested parties are collectively referred to as stakeholders. The **Humboldt County Groundwater Sustainability Agency (Humboldt County GSA)** developed an initial stakeholder list and distributes meeting notices and relevant information to the stakeholders who have requested to be notified. This list is presented in **Appendix B** (omitting contact and confidential personal information). It includes Beneficial Users, people who have signed up for the Agency's email list, and other potentially interested parties including local businesses, government agencies, associations, and service organizations. The list will evolve during GSP development as additional

stakeholders are identified. As of June 2020, 147 interested parties are included on the list. Visit the [Humboldt County Groundwater](#) website for a link to be added to the email list.

Implementation of SGMA and outreach requirements are broken down into four phases. Communication objectives and goals are discussed throughout this document and specifically discussed in Section III: Communication Objectives to Support the GSP and Section VI: Implementation Timeline.

Table 1: Consideration of various interests and examples of stakeholder groups within each of these categories.

| Category of Interest | Examples of Stakeholder Groups |
|-----------------------------|---|
| General Public | Citizens groups, Community leaders |
| Land Use | Municipalities (City, County planning departments) Regional land use agencies |
| Private users | Private pumpers, Domestic users, School systems, Hospitals |
| Urban/ Agriculture users | Water agencies, Irrigation districts, Mutual water companies, Resource Conservation Districts, Farmers/Farm Bureaus |
| Industrial users | Commercial and industrial self-supplier Local trade association or group |
| Environmental and Ecosystem | Federal and State agencies, Wetland managers, Environmental groups |
| Economic Development | Chambers of commerce, Business groups/associations, Elected officials (Board of Supervisors, City Council), State Assembly Members, State Senators, State Congress representative |
| Human right to water | Disadvantaged Communities, Small community systems, Environmental Justice Groups |
| Tribes | Tribal Government |
| Federal lands | Military bases, Department of Defense, Forest Service, National Park Service, Bureau of Land Management |
| Integrated Water Management | Regional water management groups (IRWM regions), Flood agencies, Recycled water coalition |
| Other | Businesses, Environmental consulting firms, Ag financing groups, Educational institutions |

I. Description and Background of the Eel River Valley Basin

Basin Description and Boundary

The Eel River Valley groundwater basin is adjacent to the Pacific Ocean in Humboldt County, California, and experiences a cool maritime climate and substantial winter precipitation. The basin boundary encompasses approximately 72,957 acres and 21,558 residents, with nearly half of this population residing within the City of Fortuna. In addition to agriculture and timber resources, the City of Fortuna, the City of Ferndale, the City of Rio Dell, and the unincorporated communities of Loleta, Carlotta, Hydesville, and Scotia occupy the basin. The Eel River Valley Groundwater Basin contains five (5) census designated places which are recognized by DWR as Economically Distressed Areas: Ferndale, Loleta, Fortuna, Scotia, and Rio Dell.

Groundwater is supplied for general household use, agriculture production, and industrial or business use. Groundwater suppliers in the basin include: private domestic and agricultural wells, municipal wells, and public water systems. The basin is bisected by the main stem Eel River and its tributary, the Van Duzen River, both of which provide habitat for anadromous salmonids and other fish and aquatic species. The coastal basin discharges to the Pacific Ocean near Loleta, California. Tidal influences have been recorded in Eel River water studies up to five miles upstream of the river mouth ([SHN, 2019](#)). A study performed in 2016 by the Humboldt County Resource Conservation District, and included in the Eel River Valley Basin [GSP Alternative Submittal](#), estimated that approximately 13,558 acres of agricultural lands were irrigated with groundwater, of which more than 85% was applied to grazed pasture or hay crop production for livestock. Other common basin crop types include corn, quinoa, and cannabis. The basin provides for multi-use opportunities for outdoor recreational enthusiasts. The Eel River Valley basin and Eel River watershed and are shown in **Figures 1** and **2**.

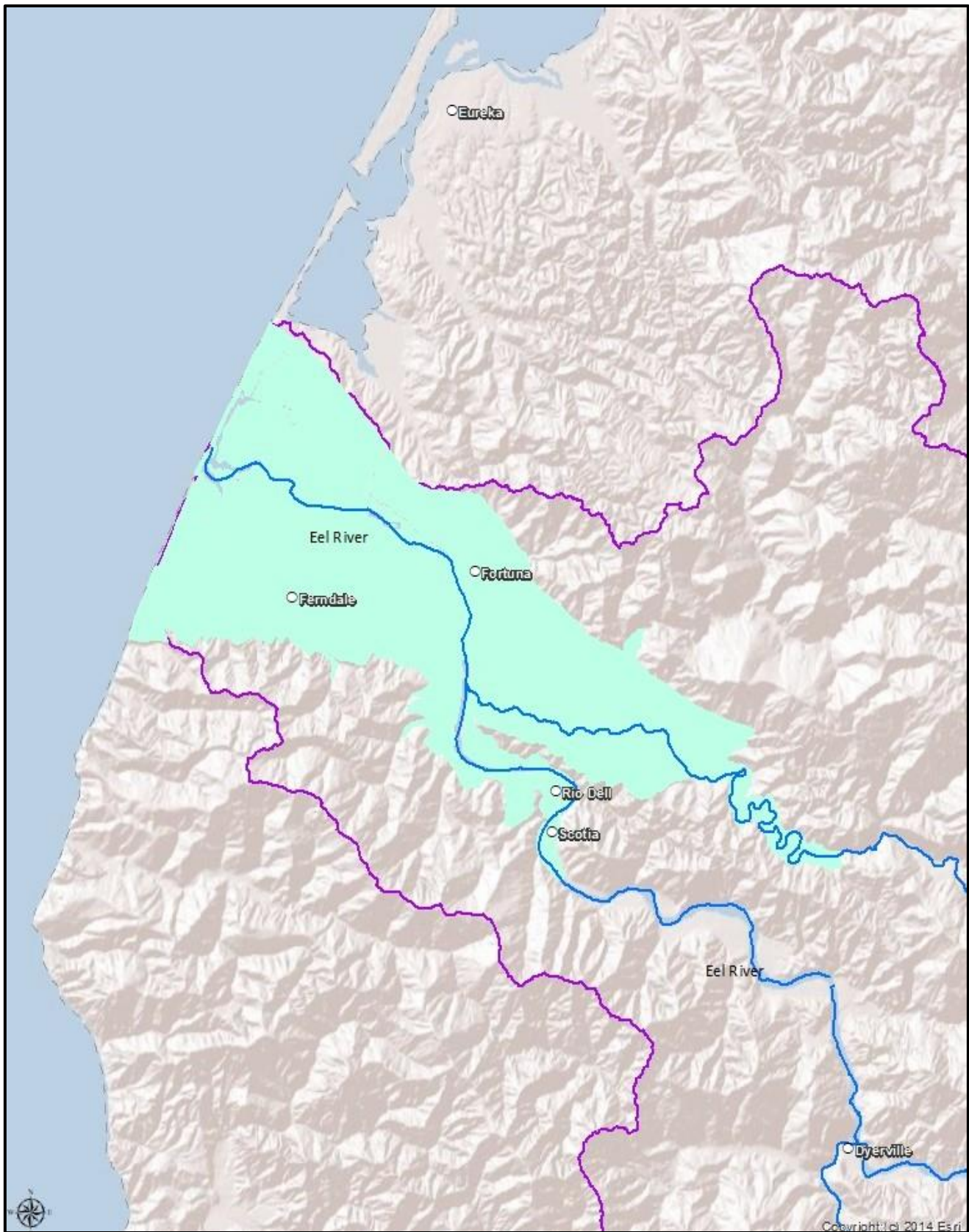


Figure 1. Image showing the Eel River Valley groundwater basin located entirely within Humboldt County, highlighted in cyan, Eel River watershed boundary (purple), and main stem of the Eel and Van Duzen Rivers is shown by the blue lines.



Figure 2. Image showing the Eel River watershed boundary (purple) across Humboldt, Trinity, Mendocino, Glen, and Lake Counties. The branches of the Eel River and its tributaries are shown by the blue lines. The Eel – Russian River basin divide is shown by the red line. The Eel River Valley basin is located entirely within Humboldt County, highlighted in cyan.

Disadvantaged Areas (DAs)

The term Disadvantaged Area (DA) refers to the collective group of Severely Disadvantaged Communities (SDACs), **Disadvantaged Communities (DAC)**, and **Economically Distressed Areas (EDAs)** (SGM Grant Program 2019 Guidelines). The term EDA is defined as “a municipality with a population of 20,000 persons or less, a rural county, or a reasonably isolated and divisible segment of a larger municipality where the segment of the population is 20,000 persons or less, with an annual median household income that is less than 85% of the Statewide median household income, and with one or more of the following conditions as determined by the department: (1) financial hardship, (2) Unemployment rate at least 2% higher than the Statewide average, or (3) low population density (Water Code §79702(k)).”

The Eel River Valley Groundwater Basin contains five (5) census designated places which are EDAs, based on DWR’s EDA Mapping Tool (<https://gis.water.ca.gov/app/edas/>). The percentage of the basin population situated within an EDA is 77% (18,066 divided by 23,384). A map depicting the five EDAs is provided in **Figure 3** and a table summarizing the median household income (MHI) and population for each place is provided below in **Table 2**.

Table 2. Median household income (MHI) and population for each EDA.

| Place | GEOID | MHI | Population |
|----------|---------|----------|------------|
| Loleta | 0642328 | \$38,542 | 624 |
| Ferndale | 0623910 | \$41,042 | 1,419 |
| Fortuna | 0625296 | \$44,904 | 11,917 |
| Rio Dell | 0660900 | \$39,981 | 3,372 |
| Scotia | 0670518 | \$44,063 | 734 |
| | | Total: | 18,066 |

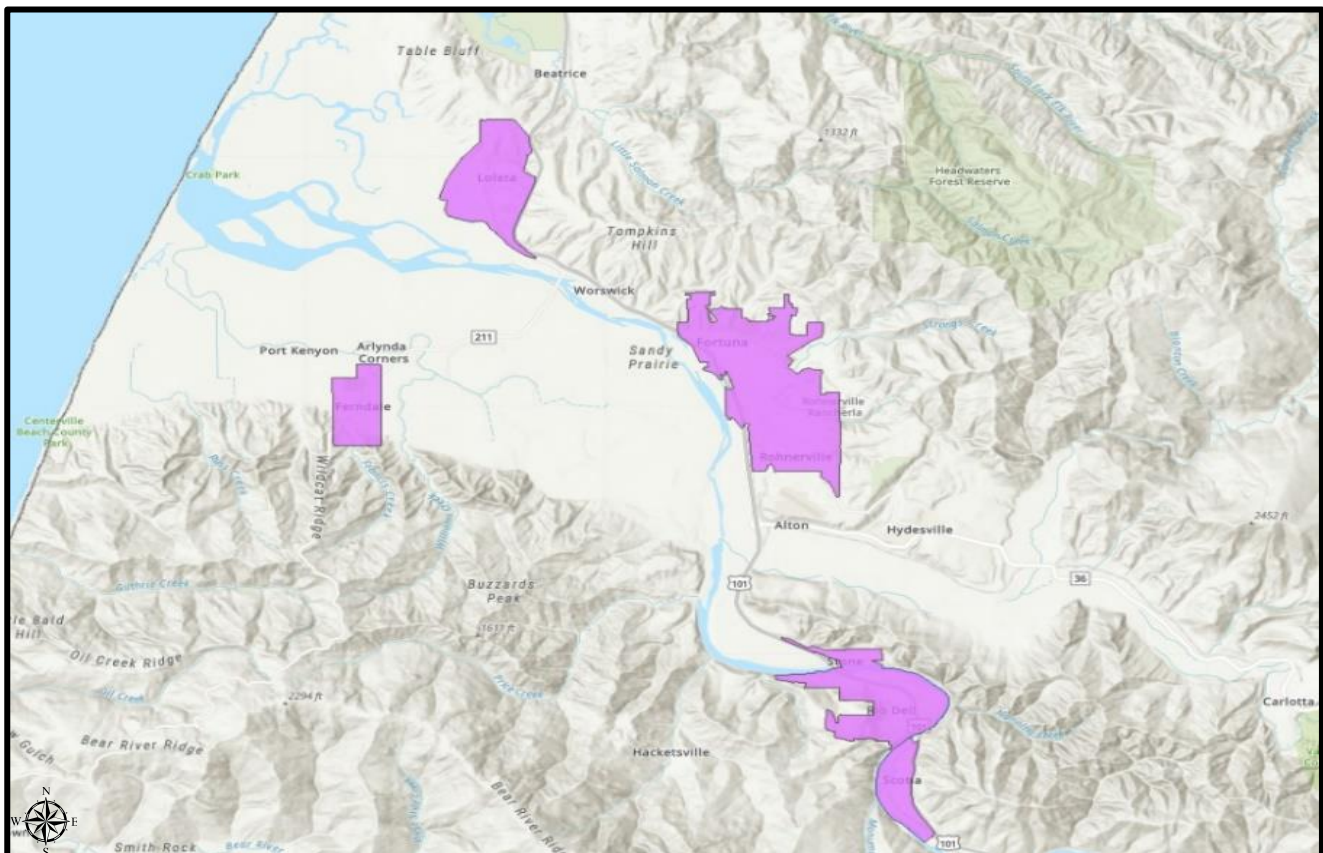


Figure 3. Image showing the five EDAs (magenta) in the Eel River Valley basin, February 14, 2020.

Basin Background

DWR designated the Eel River Valley groundwater basin as a medium-priority basin January 1, 2015. During the 2018 SGMA Basin Prioritization process, DWR renewed its designation of the Eel River Valley groundwater basin as a medium-priority basin. **Humboldt County Department of Public Works (HCDPW)**, at the direction of the **Humboldt County Board of Supervisors (BOS)**, began the process of coming into compliance with SGMA following the 2015 medium-priority basin designation. Below spells out the steps taken for this process:

- October 6, 2015, the BOS approved the formation of the **Eel River Valley Groundwater Working Group (ERGWG)** consisting of stakeholders representing agricultural, municipal and environmental interests to provide input regarding the local response to DWR's designation of the Eel River Valley groundwater basin as a medium-priority basin.
- DWR authorized local agencies to submit a GSP Alternative by January 1, 2017, if the GSP Alternative demonstrates that the basin has operated within its sustainable yield over a period of ten (10) years and contains the functional equivalent of a GSP.
- December 13, 2016, the BOS approved Resolution No. 16-142 authorizing the HCDPW to submit a GSP Alternative for the Eel River Valley groundwater basin.
- BOS deferred on formation of a GSA in 2016 because a GSP Alternative could be submitted by a local agency without forming a GSA.
- December 31, 2016, HCDPW submitted a GSP Alternative for the Eel River Valley groundwater basin to DWR for review and approval.
- HCDPW performed annual monitoring and reporting activities for the Eel River Valley groundwater basin following submittal of the GSP Alternative.
- July 17, 2019, DWR issued a notification letter and staff report stating that DWR intended to disapprove the GSP Alternative for the Eel River Valley groundwater basin because the GSP Alternative did not contain all the required elements and did not provide sufficient evidence that the requirements for sustainable groundwater management had been performed for a ten (10) year period.
- September 30, 2019, HCDPW submitted a comment letter regarding DWR's review of the GSP Alternative for the Eel River Valley groundwater basin.
- SGMA requires that all medium-priority basins have an adopted GSP no later than January 31, 2022, if a GSP Alternative has not been approved.
- November 12, 2019, the BOS approved Resolution No. 19-111 which committed the County to work collaboratively with water users and stakeholders to form a GSA for the Eel River Valley groundwater basin and authorized HCDPW to apply for a Sustainable Groundwater Management Planning Grant for the development of a GSP.
- November 13, 2019, DWR issued a notification letter and staff report stating that the GSP Alternative for the Eel River Valley groundwater basin was disapproved for the reasons stated in its notification letter dated July 17, 2019.
- March 5, 2020, there was unanimous consent among attendees of the ERGWG for the County BOS to become the **Humboldt County Groundwater Sustainability Agency (Humboldt County GSA)** for the Eel River Valley groundwater basin.
- March 13, 2020, DWR issued an award notification to Humboldt County for the aforementioned grant application for funds to develop a GSP for the Eel River Valley groundwater basin.
- May 5, 2020, after publication of notice as required by California Government Code Section 6066, the County held a public hearing regarding formation of the Humboldt County GSA for the Eel River Valley

groundwater basin. Pursuant to Sections 15306, 15307 and 15308 of Title 14 of the California Code of Regulations, adoption of Resolution No. 20-39 is exempt from the California Environmental Quality Act as information collection actions which do not result in a serious or major disturbance to an environmental resource, actions taken by regulatory agencies for protection of natural resources and actions taken by regulatory agencies for protection of the environment.

BOS authorized the formation of the Humboldt County GSA for the Eel River Valley groundwater basin.

BOS directed the HCDPW to return with proposed bylaws for the Humboldt County GSA for the Eel River Valley groundwater basin, including the structure for a **Groundwater Resources Advisory Committee (GRAC)**.

Request for Qualifications for Professional Consulting Services for the Eel River Valley Groundwater Sustainability Plan and Monitoring Well Installation Project was issued.

- May 7, 2020, HCDPW notified DWR of its intent to manage groundwater within the boundary of the Humboldt County GSA for the Eel River Valley groundwater basin.

HCDPW informed DWR of its decision to form the Humboldt County GSA for the Eel River Valley groundwater basin and to take such other and further steps as necessary to comply with the Sustainable Groundwater Management Act of 2014.

- July 22, 2020, HCDPW completed the review and selection process of the 2 proposals submitted. GHD, Inc. was selected as the Eel River Valley Groundwater Sustainability Plan and Monitoring Well Installation Project consultant. The County and Consultant are working together to develop the GSP.

Basin Governance and Decision-Making Process

The Humboldt County GSA is governed by the Humboldt County Board of Supervisors. The agency was formed under authority established by California's SGMA of 2014 and Humboldt County Board of Supervisors Resolution 20-39 (May 5, 2020). The GSA's decision-making process is broken down by the roles of the Board of Directors, staff, Eel River Groundwater Working Group, and Groundwater Resources Advisory Committee (if formed).

Role of Humboldt County GSA

The Humboldt County GSA is governed by the Humboldt County Board of Supervisors and is responsible for making final policy decisions relative to the Humboldt County GSA and adopting and implementing the Eel River Valley GSP.

The Humboldt County GSA will be staffed through the Humboldt County Department of Public Works. Public Works staff will perform the day-to-day administrative duties and technical work and make recommendations for policy decisions. During GSP development, staff will provide presentations and hold open forums on various aspects of GSP development. Information presented at GSA Board Meetings will also be presented and expanded upon at working group meetings.

Due to the State's orders regarding COVID-19, Humboldt County GSA Board meetings may be held via a web-based platform until otherwise noticed. The GSA Board operates and provides notice for these meetings consistent with the Brown Act (California Government Code 54950 et seq.). As described below regarding the GSA Website, all meeting materials are available to the public on the GSA website. Public comments are accepted at each meeting.

Role of Eel River Groundwater Working Group

On October 6, 2015, the BOS approved the formation of the ERGWG to provide input regarding the local response to DWR's designation of the Eel River Valley groundwater basin as a medium-priority basin. Through this working group, the Humboldt County GSA is able to encourage the active involvement of diverse social, cultural, and economic elements of the population within the groundwater basin prior to and during the development and implementation of the GSP.

The ERGWG is an informal organization of stakeholders that serves to provide a forum for sharing information and viewpoints and provide input to the HCDPW staff on matters dealing with GSA and GSP development, GSP implementation, and other GSA/GSP matters; open to all interested stakeholders who wish to participate.

Appendix C provides a preliminary schedule and list of meeting topics based on the current project schedule. The list and schedule are preliminary and subject to change based on the project schedule, stakeholder feedback, and at the discretion of the HCGSA. At each of these meetings, staff and/or consultant (as directed by the HCGSA) will provide a presentation to be followed by ample time for public discussion, questions and answers, and stakeholder input.

Role of Groundwater Resources Advisory Committee

In Section 10727.8 "Public Notification and Participation; Advisory Committee" of the SGMA, GSAs may appoint and consult with an advisory committee for the purpose of developing and implementing a GSP. BOS Resolution No. 20-39 directed the HCDPW to present a proposed structure for an advisory committee. At that time, the Humboldt County GSA may choose to form the GRAC. If formed, the GRAC would support and advise HCDPW staff in the GSP development and advise the Humboldt County GSA in the development and implementation of the GSP.

II. Communication Objectives to Support the GSP

The communication objectives during GSP development, public review, and implementation phases of the SGMA compliance is to encourage active involvement of diverse, social, cultural, and economic elements of the population within the Eel River Valley basin. The Humboldt County GSA will give beneficial users and users of groundwater opportunities to engage in the GSP process by providing educational outreach opportunities for stakeholders while reaching out through various communication avenues. ERGWG members are direct representatives of their communities and industries, and it is important for them to continually gather feedback/input, and concerns/needs of their constituents and report back to HCDPW staff and ERGWG meetings. Any stakeholder input received will be reviewed and taken into consideration during GSP development.

Phase 1: GSA Formation and Coordination

GSA formation and coordination has been completed. This phase spans 2019 through November 2020 and consists of the Humboldt County Board of Supervisors adopting Resolution 20-39 authorizing formation of the Humboldt County Groundwater Sustainability Agency for the Eel River Valley groundwater basin, establishing and maintaining the List of Interested Parties, and creating the Communication and Engagement Plan to outline communication efforts for the GSP development, public engagement and implementation phases. Stakeholder input was utilized during the GSA formation phase through publicly noticed meetings of the Eel River Groundwater Working Group, made up of stakeholders in the Eel River Valley basin.

Phase 2: GSP Preparation and Submission

The Humboldt County GSA will focus on the development of the GSP while working with stakeholders for feedback and input from November 2020 through December 2021. The Humboldt County GSA will

hold stakeholder meetings with the purpose of educating and informing stakeholders about SGMA and the GSP process, while also soliciting feedback and input to mitigate the negative impacts to beneficial users of groundwater as much as possible. Opportunities for stakeholder feedback and input are discussed in the following sections. The GSP is anticipated to be adopted by the Humboldt County GSA between December 2021 and January 2022. The adopted GSP will be submitted to DWR on or before January 31, 2022.

Phase 3: GSP Review and Evaluation

Phase 3 will begin following submission of the GSP to DWR in January 2022. Phase 3 focuses on GSP review and evaluation. DWR will hold a 60-day review and comment period for stakeholders. DWR will begin review of the GSP and provide an evaluation to Humboldt County GSA within 2 years.

Phase 4: Implementation and Reporting

Phase 4 will begin immediately after submitting the plan in January 2022. During the implementation phase, communication and engagement efforts will be focused on educational and informational awareness of the requirements and processes of achieving or maintaining groundwater sustainability by 2042. This will be an ongoing phase, as the GSP has a fifty-year planning horizon with measurable objectives, interim milestones in increments of five years that would achieve sustainability twenty years from the start of implementing the plan (SGMA Section 10727.2(b)(1)) in 2042.

Time Period: The Plan is intended to cover stakeholder communication and engagement from November 2020 -January 2022, from when the GSP is due to be submitted to California Department of Water Resources through the 20-year sustainability goal.

Note: This Plan presents a set of potential outreach methods and a preliminary plan for stakeholder engagement by the Humboldt County Groundwater Sustainability Agency during preparation and implementation of the Groundwater Sustainability Plan for the Eel River Valley groundwater basin. The Humboldt County Groundwater Sustainability Agency will select appropriate outreach tools for each stakeholder event. In order to ensure an adaptive, responsive approach to stakeholder outreach and engagement, this plan may be updated and amended during its implementation.

III. Eel River Groundwater Basin Stakeholders

SGMA Section 10723.2 “Consideration of All Beneficial Uses and Users of Groundwater” states: *The groundwater sustainability agency shall consider the interests of all beneficial uses and users of the groundwater, as well as those responsible for implementing groundwater sustainability plans.*

SGMA Section 10723.4 “Maintenance of Interested Persons List” states: *The groundwater sustainability agency shall establish and maintain a list of persons interested in receiving notices regarding plan preparation, meeting announcements, and availability of draft plans, maps, and other relevant documents. Any person may request, in writing, to be placed on the list of interested persons.* In compliance with the SGMA requirement, Humboldt County GSA maintains a list of interested persons, and distributes meeting notices and relevant information to the stakeholders who have requested to be included. A list of identified stakeholders representing the interests of beneficial users is included in Attachment A.

Beneficial Users of Groundwater

- **Agricultural Users** – Approximately 20% of the basin area is utilized by agricultural users who are solely reliant on groundwater for their irrigation needs. Agricultural users include livestock or crop producers. Organizations representing the interests of agricultural users include the Humboldt County Farm Bureau.
- **Domestic well owners** – Domestic well owners are located within the Humboldt County GSA boundary on rural residential and agricultural properties.
- **Municipal well operators** – The City of Fortuna and City of Rio Dell are municipal well operators within the Humboldt County GSA boundary.
- **Public water systems** – Public water system operators within the Humboldt County GSA boundary not included in the municipal well operator category above include the Del Oro Water Company (Ferndale area), Loleta Community Services District, Hydesville Community Services District, Palmer Creek Community Services District, Riverside Community Services District, and Bear River Band of the Rohnerville Rancheria.
- **Local land use planning agencies** – Local land use planning agencies include County of Humboldt, City of Fortuna, City of Rio Dell, and City of Ferndale.
- **Environmental users of groundwater** – Groundwater serves to replenish surface waters such as the Eel and Van Duzen Rivers which have multiple beneficial uses including cold freshwater habitat, water recreation, and sport fishing. Humboldt County will consult with interested non-profit organizations active within the basin, along with the California Department of Fish & Wildlife, U.S. Fish & Wildlife Service, and National Marine Fisheries Service.
- **Surface water users** – Surface water users include the City of Rio Dell and Scotia Community Services District. In addition, Humboldt County will review the State Water Resources Control Board’s Electronic Water Rights Information Management System (eWRIMS) to review information on surface water rights within the Humboldt County GSA boundary.
- **Federal government, including but not limited to military and managers of federal lands** – Humboldt County is not aware of any federally managed lands within the Humboldt County GSA boundary. The Humboldt County GSA will consult with U.S. Fish & Wildlife Service, National Marine Fisheries Service, and the U.S. Geological Survey.
- **California Native American Tribes** – Native American Tribes located within the Humboldt County GSA boundary include the Bear River Band of the Rohnerville Rancheria. In addition, the Wiyot Tribe has a

close cultural connection to the lower Eel River.

- **Disadvantaged communities, including, but not limited to, those served by private domestic wells or small community water systems** – The basin contains five census designated places (Loleta, Fortuna, Ferndale, Rio Dell, and Scotia) which are Economically Distressed Areas (EDAs), based on DWR's EDA Mapping Tool (<https://gis.water.ca.gov/app/edas/>). The percentage of the basin population situated within an EDA is 77%.
- **Entities listed in Water Code section 10927 that are monitoring and reporting groundwater elevations in all or part of the groundwater basin managed by the groundwater sustainability agency-** Humboldt County and DWR collaborate on the monitoring and reporting of groundwater elevations within the basin under the California Statewide Groundwater Elevation Monitoring (CASGEM) program.

Identification of Stakeholder Issues and Interests

Through discussions with the Eel River Groundwater stakeholder working group, overriding concerns, major concerns or challenges are centralized around the economic impacts to agricultural industries, which also have direct impacts on DACs, salt water intrusion in the aquifer(s), and impacts to surface water habitat.

The Humboldt County GSA will continue to provide opportunities for stakeholders to identify and discuss concerns, interests, and anticipated challenges. Humboldt County GSA and ERGWG members represent the interests of the stakeholders identified for the Eel River Valley basin. Stakeholder concerns and input, resulting from these discussions, will be summarized in written format and presented to the Humboldt County GSA, ERGWG, and GRAC (if formed) for consideration during the GSP development and may also be used for any communications and public meeting presentations held for DACs and other stakeholder groups.

Methods for stakeholders to identify concerns, interests, or anticipated challenges include:

- Attend Humboldt County GSA Board meetings and participate in the public comment
- Attend the ERGWG meetings and participate in discussions
- Have a direct conversation with a Humboldt County GSA Board member or staff
- Provide a written/typed letter or email to the Humboldt County GSA Board (Humboldt County GSA, Hank Seemann, 1106 Second St, Eureka, CA 95501. Email: hseemann@co.humboldt.ca.us)
- Complete and submit the DWR Stakeholder Survey Form to Humboldt County GSA, Hank Seemann, 1106 Second St, Eureka, CA 95501, email: hseemann@co.humboldt.ca.us (**Appendix D**)

IV. Methods for Public Notification, Education, and Engagement

The Humboldt County GSA seeks to provide multiple opportunities and formats to notify the public about upcoming meetings, provide GSP status updates, educate Beneficial Users, and obtain public input about various GSP components. These opportunities include Humboldt County GSA Board meetings, ERGWG or GRAC meetings, the Humboldt County Groundwater website, Board Director or staff updates and discussions at meetings held by other agencies and organizations, emails and mailings, informational posters and flyers, video presentations, social media postings, and local media advertisements and articles. Informational material may also be offered in Spanish. The Humboldt County GSA may use DWR’s Written Translation Service to communicate the groundwater planning activities with their non-English speaking constituents. The anticipated functions of these meetings and media are summarized on **Table 3**. The outreach methods listed in Table 3 and described below are intended to present a range of options available to the Humboldt County GSA as it conducts stakeholder engagement. The Humboldt County GSA will choose the appropriate and most effective methods from among these options (likely using a combination of some but not necessarily all of the listed options) as well as additional methods that may become available. The outreach approach may change during the course of developing the GSP based on insights gained and feedback from stakeholders. Due to COVID-19, it is not anticipated that large gatherings will be held, rather meetings will be held via video conferencing or one-on-one in person when appropriate. **Appendix E** provides an example evaluation form that the Agency may use to obtain meeting participant feedback. **Appendix F** provides a means for tracking stakeholder outreach efforts completed by the Humboldt County GSA.

Table 3: Notification, Education, and Engagement Meetings and Media.

| Meetings/Media | Notify and Inform about Upcoming Meetings and Project Status | Educate (SGMA and GSP Topics) | Obtain Public Input |
|---|--|-------------------------------|---------------------|
| Humboldt County GSA Board | √ | √ | √ |
| Eel River Groundwater Working Group or Groundwater Resources Advisory Committee | √ | √ | √ |
| Humboldt County Groundwater Website | √ | √ | |
| Humboldt County GSA Board Director, staff, or consultants outreach at meetings held by other agencies and organizations | √ | √ | √ |
| Emails, mailings, posters, and flyers | √ | √ | |
| Video presentations | √ | √ | |
| Social media (Facebook) | √ | √ | |
| Local media | √ | √ | |
| Other agency and organization communications (websites, newsletters, etc.) | √ | √ | |
| Posters or Flyers | √ | √ | |

A. Humboldt County Groundwater Website

The [Humboldt County Groundwater](#) website will be a tool for distributing and archiving meeting and communication materials, a repository for any studies, a resource for information about SGMA and groundwater, a means for providing updates on milestone progress to the public and to support public awareness. Staff anticipates updating the website on a quarterly basis or more often if needed. The website includes:

- Information about the Humboldt County GSA
- Meeting calendar
- Meeting materials, including agendas, Board packets, minutes, and presentations
- SGMA information and resource documents or links
- Technical reports and public drafts of SGMA required documents
- Progress updates, either written or through short pre-recorded videos
- Agency contact information

B. Outreach at Meetings Held by Other Agencies and Organizations

In addition to the Stakeholder meetings provided by the Humboldt County GSA for the purpose of GSP engagement, meetings held by other agencies and organizations provide opportunities for outreach. Humboldt County GSA Board Directors, staff, or consultants will provide periodic GSP updates and information at meetings held by other agencies and organizations. Such meetings include but may not be limited to:

- Bear River Band of the Rohnerville Rancheria Tribal Council
- City of Ferndale Council
- City of Fortuna Council
- City of Rio Dell Council
- Eel River Groundwater Working Group
- Groundwater Resources Advisory Committee (if formed)
- Humboldt County Board of Supervisors
- Humboldt County Farm Bureau
- Humboldt County Resource Conservation District
- Salt River Watershed Council
- Buckeye Conservancy
- Humboldt Del Norte Cattlemen Association/Cattlegirls
- North Coast Grower's Association

C. Emails, Mailings, Posters, and Flyers

The Humboldt County GSA will send emails and/or mailings to stakeholders on the stakeholder interest list (Appendix B) about upcoming Board and GRAC meetings, and general GSP updates. Posters and flyers may be used as additional outreach material to disseminate information to the public and be posted or made available at local feed stores, coffee shops, or frequently trafficked locations.

D. Video Presentations

Due to the State's orders regarding COVID-19, and to avoid large gatherings, pre-recorded video presentations may be used to provide progress updates to the public. Humboldt County GSA, ERGWG, and GRAC meetings may be held via a web-based platform and recorded for later viewing.

E. Social Media

The Humboldt County GSA will leverage social media technologies (ie. Facebook) to disseminate information only, such as provide project information and progress updates, and educational materials to stakeholders. Social media will not be used as a discussion platform nor as a means for gathering feedback and input from the public.

- Look us up on Facebook: [Humboldt County Groundwater Sustainability Agency](#)

F. Local Media

The Humboldt County GSA may choose to advertise upcoming meetings in local newspapers, radio and TV stations, and may also prepare press releases. The press releases may be distributed to local and regional media and Legislative and Congressional representatives.

G. Other Agencies' and Organizations' Communication Channels

The Humboldt County GSA may request that other organizations include information about the GSP and upcoming meetings in their newsletters and/or on their websites, including but not limited to:

- Humboldt County Farm Bureau (<https://www.humboldtcountyfarmbureau.com/>)
- Humboldt County Resource Conservation District (<http://humboldtrcd.org/>)
- University of California Cooperative Extension-Humboldt County (<https://humboldt.gov/614/UC-Cooperative-Extension>)
- Buckeye Conservancy (<http://buckeyeconservancy.org/>)

Stakeholder Survey and Mapping

Through ongoing communications, public education, and outreach efforts, stakeholders will have the opportunity to have a voice in the GSP development process. Stakeholder surveys and discussions are a valuable source in collecting feedback from the beneficial users who have vested interests in how the implementation of the GSP will affect their interests. Because the Humboldt County GSA established efficient avenues of direct communication with stakeholders, a traditional stakeholder survey will not be conducted. Feedback and concerns will be solicited through direct correspondence and discussions with stakeholders. However, a survey form will be made available upon request for any stakeholder who wishes to provide feedback (Appendix D).

V. Implementation Timeline

Milestones and stakeholder engagement opportunities throughout the GSP development process are shown in Figure 1: SGMA Notification and Engagement Requirements. Supporting tactics or tools that may be used to communicate information and resources available to stakeholders during each phase is described below:

Phase 1: GSA Formation and Coordination

This phase spans 2019 through November 2020 and consists of:

- ERGWG unanimously approved of the County becoming the GSA for the Eel River Valley groundwater basin
- Humboldt County Board of Supervisors adopted Resolution 20-39 authorizing formation of Humboldt County GSA for the Eel River Valley groundwater basin
- Stakeholder input was utilized during the GSA formation phase through publicly noticed meetings of the Eel River Groundwater Working Group, made up of stakeholders in the Eel River Valley basin
- Execution of the grant agreement from DWR to support the GSP development
- Establish and maintain the List of Interested Parties
- Solicit requests for proposals and selected GHD, Inc. as a consultant to conduct basin studies and develop the GSP
- Maintain communication channels with the Eel River Groundwater Working Group
- Develop the Stakeholder Communications and Engagement Plan to outline communication efforts for the GSP development and implementation phases
- Develop and launch a user-friendly website and provide periodic updates
- Provide periodic email updates to those on the interested persons list (Appendix B)

Phase 2: GSP Preparation and Submission

This phase spans November 2020 through January 2022 and consists of:

- Development of the GSP while working with stakeholders for feedback and input.
- Work with GHD, Inc. to prepare the GSP following the steps described in the DWR grant agreement scope of work.
- Hold stakeholder meetings with the purpose of educating and informing stakeholders about SGMA and the GSP process, while also soliciting feedback and input to mitigate the negative impacts to beneficial users of groundwater as much as possible. Opportunities for stakeholder feedback and input are discussed in the previous sections.
- When it is not feasible to hold in-person meetings, provide email or website updates on progress either written or pre-recorded short videos.

Phase 3: GSP Review and Evaluation

This phase begins following submission of GSP to DWR, spanning from February 2022 through 2024 and consists of:

- DWR will hold a 60-day review and comment period for stakeholders.
- Public comment can be submitted via SGMA Portal for 60-days.
- GSP will be posted on the Humboldt County Groundwater website for the public and stakeholders to

conveniently download and review.

- DWR will begin review of the GSP and provide an evaluation to Humboldt County GSA within 2 years.

Phase 4: Implementation and Reporting

Phase 4 will begin immediately after submitting the plan in January 2022. During the implementation phase, communication and engagement efforts will be focused on educational and informational awareness of the requirements and processes of reaching or maintaining groundwater sustainability by 2042. This will be an ongoing phase, as the GSP has a fifty-year planning horizon with measurable objectives, interim milestones in increments of five years that would achieve or maintain sustainability twenty years from the start of implementing the plan (SGMA Section 10727.2(b)(1)) in 2042.

Key Messages

As the Humboldt County GSA begins the process of reaching out to stakeholders to inform and engage them in groundwater management issues and items, it is critical that it share clear and consistent key messages to avoid confusion and misunderstanding. Key messages include the following:

- Preparing a GSP is **required** by SGMA.
- SGMA allows for **local control** if the GSP is prepared within the specified timeline (by January 31, 2022).
- Information obtained during GSP development will allow for a determination of basin sustainable yield and will **empower** local stakeholders to effectively manage the groundwater basin.
- The intent of SGMA is for groundwater resources to be managed sustainably for long-term reliability and multiple economic, social, and environmental benefits.
- The GSP will increase **confidence** and reduce uncertainty about the future sustainability of our ground water supply.
- The GSA is committed to an **open and transparent** GSP preparation process.

VI. Evaluation and Assessment

Milestone Review

The Humboldt County GSA staff evaluate the effectiveness of its outreach and engagement methods throughout the process and, in particular, following each Stakeholder meeting. Appendix E provides an example evaluation form that the Agency may use to obtain meeting participant feedback. Among the factors to be considered are:

- How well was the meeting attended?
- How did attendees find out about the meeting?
- What topics were attendees most interested in during the meeting?
- Were the presentations clear and effective in conveying the information needed by stakeholders to understand and take part in GSP development?
- Was there ample time for discussion, questions, and answers?
- Did attendees have an opportunity to provide meaningful input?

Humboldt County GSA staff will facilitate an in-depth discussion with the Board for feedback regarding communication and engagement efforts for the stakeholder groups. Discussion topics include:

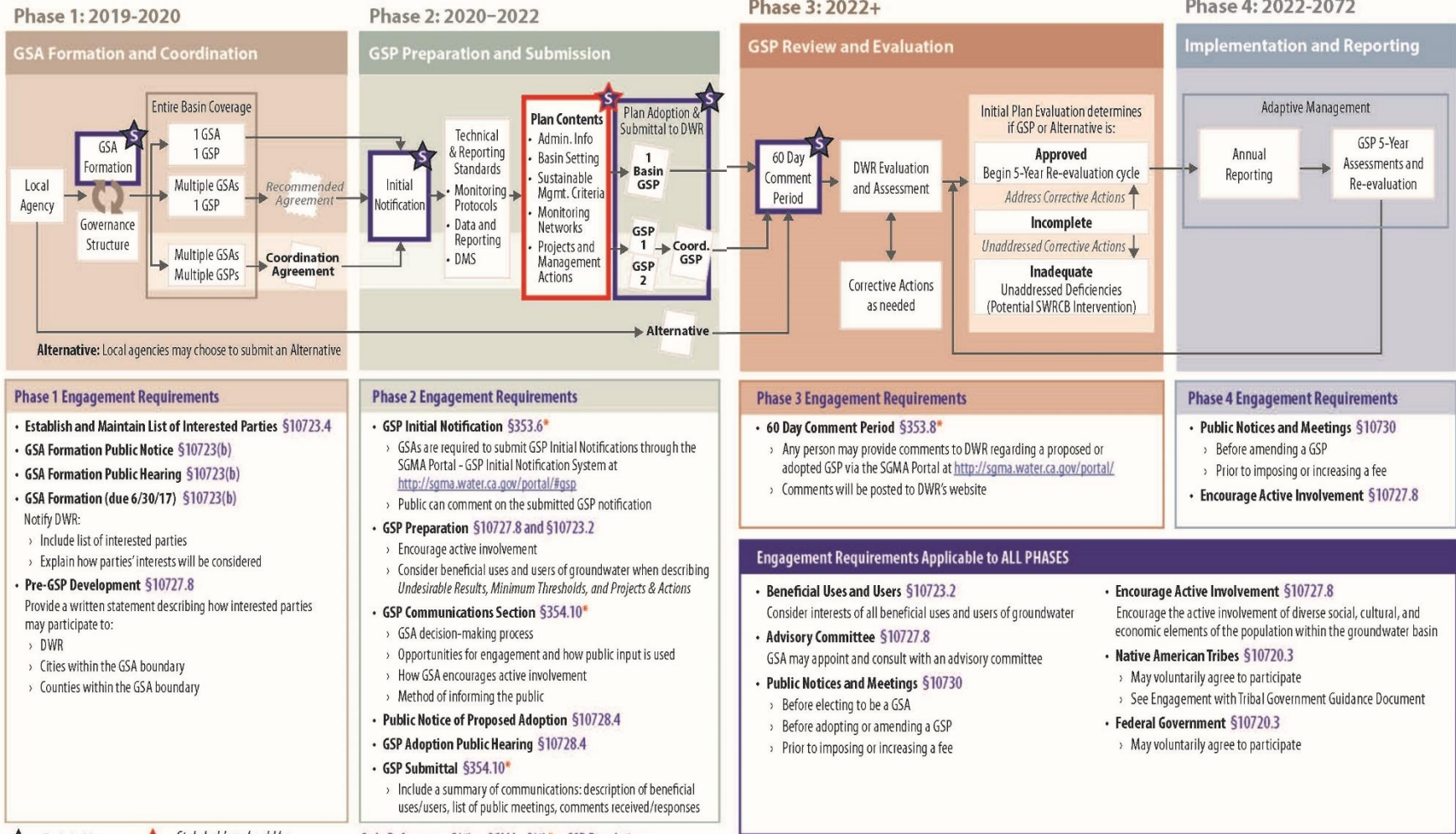
- Successful outreach and what worked well
- What has not worked well or needs adjusting for more effective results
- Additional outreach methods to consider or adopt
- Lessons learned
- Next steps

Appendices

Appendix A: Stakeholder Engagement Requirements by Phase

SGMA Notification and Engagement Requirements as described in the DWR guidance document for groundwater sustainability plans (<https://groundwaterexchange.org/wp-content/uploads/2020/02/DWR-Stakeholder-Communication-and-Engagement.pdf>).

Stakeholder Engagement Requirements by Phase



★ Stakeholder Input
 ★ Stakeholders should be informed throughout the development of Plan Content

Appendix B: Interested Persons List

The following table provides a list of Beneficial Users and potentially interested parties identified to date. This list will evolve during the GSP preparation process.

| Beneficial User/Groundwater Interest Category | Stakeholder Name | Organization/Affiliation |
|--|----------------------------------|--------------------------------------|
| Agricultural user | Andy & Sarah Albin | Albin Dairy |
| Agricultural user | Andy Titus | Fern Vallee Farms |
| Agricultural user | Blake Alexandre | Alexandre Family Farms |
| Agricultural user | Bobby Dolcini | Riverside Dairy |
| Agricultural user | Chad Lake | Sequoia Orchids |
| Agricultural user | Chris Cahill | Cahill Dairy |
| Agricultural user | Chris Howard | Alexandre Family Farms |
| Agricultural user | Cliff Clendenen | Clendenen's Cider Works |
| Agricultural user | Cody & Thomas Nicholson-Stratton | Foggy Bottoms Dairy |
| Agricultural user | Colton Brodt | Brodt Dairies |
| Agricultural user | Daniel & Jordon DelBiaggio | Del Biaggio Dairies |
| Agricultural user | Daren & Karen Hansen | D.Hansen Dairy |
| Agricultural user | Dave Renner | Diamond Point Dairy |
| Agricultural user | Dennis Leonardi | Evening Star Holsteins |
| Agricultural user | Denver Nelson | |
| Agricultural user | Eric Bess | Bess Dairy |
| Agricultural user | Frank Boldrini | Boldrini Dairy |
| Agricultural user | Frank Leonardo | Grizzly Bluff Holsteins |
| Agricultural user | Gene Sarvinski | Sarvinski Dairy |
| Agricultural user | George Toste | Toste Dairy |
| Agricultural user | Jay Russ | Russ Ranches |
| Agricultural user | Jeremy Weaver | NorthCoast Pump House |
| Agricultural user | Jim and Susan Regli | Regli Jerseys and Reas Creek Jerseys |
| Agricultural user | Jim Renner | Renner Ranches |
| Agricultural user | Jim Walker | Walker Dairy |
| Agricultural user | Johanna Rodoni | |
| Agricultural user | John Vevoda | Vevoda Dairy |
| Agricultural user | Joseph Alexandre | Alexandre Family Farms |
| Agricultural user | Katherine Ziemer | Humboldt County Farm Bureau |
| Agricultural user | Lee Mora | Humboldt Grassfed Beef |
| Agricultural user | Leslie O'Neil | O'Neil Dairy |
| Agricultural user | Lucas McCanless | McCanless Dairy |
| Agricultural user | Mario Avelar | Avelar Brothers Dairy |
| Agricultural user | Mark & Nikki Miranda | M & N Miranda Dairy |

| | | |
|-----------------------------------|----------------------|---|
| Agricultural user | Matt Boynton | Riverside Ranch |
| Agricultural user | Melissa Lema | Western United Dairyman |
| Agricultural user | Mike Boynton | Mike Boynton Dairy |
| Agricultural user | Mike Griffith | Griffith Dairy |
| Agricultural user | Pete & Mary Bansen | Bancrest Dairy Inc. |
| Agricultural user | Ray Shinn | Shinn Dairy |
| Agricultural user | Robert Hansen | Hansen Dairy |
| Agricultural user | Robin Renner | Diamond R Ranch |
| Agricultural user | Rusty Rocha | Rocha Dairy |
| Agricultural user | Ryan Rice | RP Rice Construction |
| Agricultural user | Sharon Lutz | Green Acres Dairy |
| Agricultural user | Steve Scilacci | Scilacci Dairy |
| Agricultural user | Tim & Dorice Miranda | Miranda Dairy |
| Agricultural user | Tim Phillis | |
| Agricultural user | Tom Ghidinelli | Pleasant Point Dairy |
| Agricultural user | Tom Losa | Losa Dairy |
| Agricultural user | Tom Rayl | Rayl Dairy |
| Agricultural user | Tracy Coppini | Coppini Lane Jerseys |
| Agricultural user | Zach Cahill | Cahill Dairy |
| Business-environmental consulting | Ben Gettleman | Kearns & West |
| Business-environmental consulting | Brad Job | Pacific Watershed Associates |
| Business-environmental consulting | Brianne Kolson | NRM |
| Business-environmental consulting | Christine Manhart | LACO Associates |
| Business-environmental consulting | Dave Fisch | Fisch Drilling |
| Business-environmental consulting | Frank Bickner | Jacobson James & Associates |
| Business-environmental consulting | Gary Simpson | SHN Consulting Engineers |
| Business-environmental consulting | Jason Buck | SHN Consulting Engineers |
| Business-environmental consulting | Kelly Morris | LACO Associates |
| Business-environmental consulting | Mark McGowan | Jacobson James & Associates |
| Business-environmental consulting | Mark Nichols | Jacobson James & Associates |
| Business-environmental consulting | Michael Bombard | GHD, Inc. |
| Business-environmental consulting | Orrin Plocher | Freshwater Environmental Services |
| Business-environmental consulting | Patrick Sullivan | GHD, Inc. |
| Business-environmental consulting | Rob Frizzell | Professional Engineers in California Government |
| Business-environmental consulting | Ryan Crawford | GHD, Inc. |
| Business-environmental consulting | Tom Gast | Thomas Gast and Associates |

| | | |
|------------------------------------|----------------------|--|
| California Native American tribes | Eddie Kock | Wiyot Tribe |
| Domestic well owner | Cheryl Laffranchi | |
| Domestic well owner | David Sopjes | |
| Environmental users of groundwater | Darren Mierau | CalTrout |
| Environmental users of groundwater | Pat Higgins | Friends of the Eel River |
| Environmental users of groundwater | Scott Greason | Friends of the Eel River |
| Federal government | Jon Shultz | USDA-NRCS |
| Local land use planning agencies | Adam Weinberg | RWQCB |
| Local land use planning agencies | Ben Dolf | County of Humboldt |
| Local land use planning agencies | Brianna Seapy | CDFW |
| Local land use planning agencies | David Manthorne | CDFW |
| Local land use planning agencies | Estelle Fennell | County of Humboldt |
| Local land use planning agencies | Hank Seemann | County of Humboldt |
| Local land use planning agencies | Jane Arnold | CDFW |
| Local land use planning agencies | Jeff Dolf | County of Humboldt |
| Local land use planning agencies | Jeff Jahn | NOAA |
| Local land use planning agencies | Jennifer Curtis | USGS |
| Local land use planning agencies | Jeremiah Puget | RWQCB |
| Local land use planning agencies | John Miller | County of Humboldt |
| Local land use planning agencies | John Wellik | County of Humboldt |
| Local land use planning agencies | Kristal Davis-Fadtke | CDFW |
| Local land use planning agencies | Mark Smelser | CDFW |
| Local land use planning agencies | Mary Jane Ashton | County of Humboldt |
| Local land use planning agencies | Matt Goldsworthy | NOAA |
| Local land use planning agencies | Merritt Perry | City of Fortuna |
| Local land use planning agencies | Michael Wheeler | County of Humboldt |
| Local land use planning agencies | Michelle Dooley | DWR |
| Local land use planning agencies | Norm Crawford | County of Humboldt |
| Local land use planning agencies | Randy Hooper | County of Del Norte |
| Local land use planning agencies | Rex Bohn | County of Humboldt |
| Local land use planning agencies | Robert Vogt | County of Humboldt |
| Local land use planning agencies | Stephen Umbertis | County of Humboldt |
| Local land use planning agencies | Summer Daugherty | County of Humboldt |
| Local land use planning agencies | Zachary Stanko | USGS |
| Local land use planning agencies | Rick Rogers | NOAA Fisheries West Coast Region |
| Local land use planning agencies | Ian Espinoza | DWR |
| Local land use planning agencies | Patricia Vellines | DWR |
| Local land use planning agencies | Monty Larson | CDFW |
| Local land use planning agencies | Claudia Faut | USGS |
| Municipal well operator | Kevin Farmer | Palmer Creek Community Services District |

| | | |
|---|---|--|
| Municipal well operator | Cameron Yaple (General Manager) | Hydesville Community Water District |
| Municipal well operator | Christopher Christianson (Chief Treatment Plant Operator) | City of Fortuna |
| Municipal well operator | Marcus Drumm (General Manager) | Loleta Community Services District |
| Municipal well operator | Mary Burke | Mckinleyville Community Service District |
| Municipal well operator | Paul Skofield (Operator) | Riverside Community Services District |
| Municipal well operator/California Native American tribes | Hank Brenard (Environmental and Natural Resources Director) | Bear River Band of the Rohnerville Rancheria |
| Municipal well operator/Surface water user | Cameron Yaple (General Manager) | City of Rio Dell |
| Municipal well operator/Surface water user | Kyle Knopp | City of Rio Dell |
| Other-interested individual | Alex Blessing | The Wildlands Conservancy |
| Other-interested individual | Ethan Amezcua | |
| Other-interested individual | Hollie Hall | |
| Other-interested individual | Jack Rice | Consultant |
| Other-interested individual | John Corbett | |
| Other-interested individual | Julie Houtby | Farm Ag Credit |
| Other-interested individual | NCH | |
| Other-interested individual | Nick Angeloff | |
| Other-interested individual | Renee Abrams | |
| Other-interested individual | Russ Forsburg | Farm Ag Credit |
| Other-interested individual | Stuart Dickey | |
| Other-interested individual | Tracy Boobar | |
| Other-interested individual | Vivian Helliwell | Medocino Community Network |
| Other-interested individual | Annje Dodd | |
| Public water system | Troy Hubner (Asst. Field Superintendent) | Del Oro Water Company |
| State agency | Bob McPherson | Humboldt State University |
| State agency | Christopher Watt | RWQCB |
| State agency | Doreen Hansen | Humboldt County RCD |
| State agency | Frances Tjarnstrom | Humboldt County RCD |
| State agency | Gary Markegard | Humboldt County RCD |
| State agency | Jacob Taulbee | Humboldt County RCD |
| State agency | Jasper Oshun | Humboldt State University |
| State agency | Jeff Stackhouse | UCCE |

| | | |
|---------------------|-----------------------------------|------------------------------------|
| State agency | Jill Demers | Humboldt County RCD |
| State agency | Justin Ebrahemi | Humboldt State University |
| State agency | Yana Valachovic | UCCE |
| State agency | Senator Mike McGuire | State Government |
| Surface water users | Leslie Marshall (General Manager) | Scotia Community Services District |

Appendix C: Preliminary Groundwater Working Group/Groundwater Resources Advisory Committee Meeting Schedule

The following meeting topic and frequency list is preliminary and subject to change based on the project schedule, stakeholder feedback, and the Board’s discretion.

Modeling, Water Budget, Basin Setting, and Sustainable Management Criteria – Fall 2020 and Winter 2021 (Location to be determined)

- Data collection - landowner participation, and timing
- Technical discussion of the model
- Well monitoring
- Water budget

Data Gaps and Sustainability Goals – Spring and Summer 2021 (Location to be determined)

- Identify data gaps, additional data collection as needed
- Sustainability goals
 - Undesirable results
 - Minimum thresholds
 - Measurable objectives

Proposed Projects, Management Actions, and Monitoring– Fall 2021 (Location to be determined)

- Proposed Projects and Management Actions to be considered in the GSP
- Monitoring network and data management system

Appendix D: DWR Stakeholder Survey Form

Stakeholder Survey Template

Page 1 of 1

Stakeholder Survey Template

Date:

Organization or Business Name:

Name of Primary Contact or Individual Stakeholder Name:

Contact Information for primary contact or individual stakeholder:

Email:

Twitter:

Cell:

Website:

| Question | Response | Notes |
|---|-----------------|--------------|
| Are you familiar with SGMA regulations? | | |
| Are you currently engaged in activity or discussions regarding groundwater management in this region? | | |
| Do you own or manage operate land in this region? | | |
| Do you manage water resources? If yes, what is your role? | | |
| What is your primary interest in land or water resources management? | | |
| Do you have concerns about groundwater management? If so, what are they? | | |
| Do you have recommendations regarding groundwater management? If so, what are they? | | |
| What else do you want me to know? | | |
| Who else should we listen to? | | |

California Department of Water Resources

SGMA Stakeholder Communication and Engagement Digital Toolkit

Appendix E: Stakeholder Meeting Evaluation Form

Humboldt County Groundwater Sustainability Agency Eel River Valley Basin Groundwater Sustainability Plan Stakeholder Meeting Evaluation

Meeting Date: _____

Please answer the following questions about today's meeting by circling the appropriate number.

| | Excellent | Good | Average | Poor | Very Poor | N/A No Opinion |
|--|------------------|-------------|----------------|-------------|------------------|-------------------------------|
| | (5) | (4) | (3) | (2) | (1) | (0) |
| What is your overall rating of today's meeting? | 5 | 4 | 3 | 2 | 1 | 0 |
| Rate the usefulness to you of the information in today's meeting | 5 | 4 | 3 | 2 | 1 | 0 |
| Rate how clearly the material was presented | 5 | 4 | 3 | 2 | 1 | 0 |
| Rate the opportunity provided to ask questions, discuss concerns, and provide input to the GSP | 5 | 4 | 3 | 2 | 1 | 0 |
| Rate the location accessibility of today's meeting | 5 | 4 | 3 | 2 | 1 | 0 |
| Rate the length of today's meeting | 5 | 4 | 3 | 2 | 1 | 0 |

ADDITIONAL QUESTIONS AND SPACE FOR COMMENTS ON REVERSE SIDE

Contact Information (Optional)

Name: _____

Email address: _____

Phone number: _____

How did you hear about this meeting?

What information did you find most useful?

What additional information or presentations would be useful and interesting to you?

What suggestions do you have to improve these meetings?

Please include any additional comments that you have regarding the meeting:

Appendix F: Stakeholder Outreach Tracking and Documentation Tool

Stakeholder Outreach Tracking and Documentation Tool

| Meeting Date/Location | Agency/ Organization | Email-blast to Stakeholder List? when? | Mailings? When? | Flyer distributed at other meetings/events? Where and when? | Additional outreach and publicity (press release, ads, posting on other websites, notice in other newsletters) | Topics discussed at meeting | # of participants, interests represented | Evaluation, additional comments |
|-----------------------|----------------------|--|-----------------|---|--|-----------------------------|--|---------------------------------|
| | | | | | | | | |
| | | | | | | | | |
| | | | | | | | | |
| | | | | | | | | |