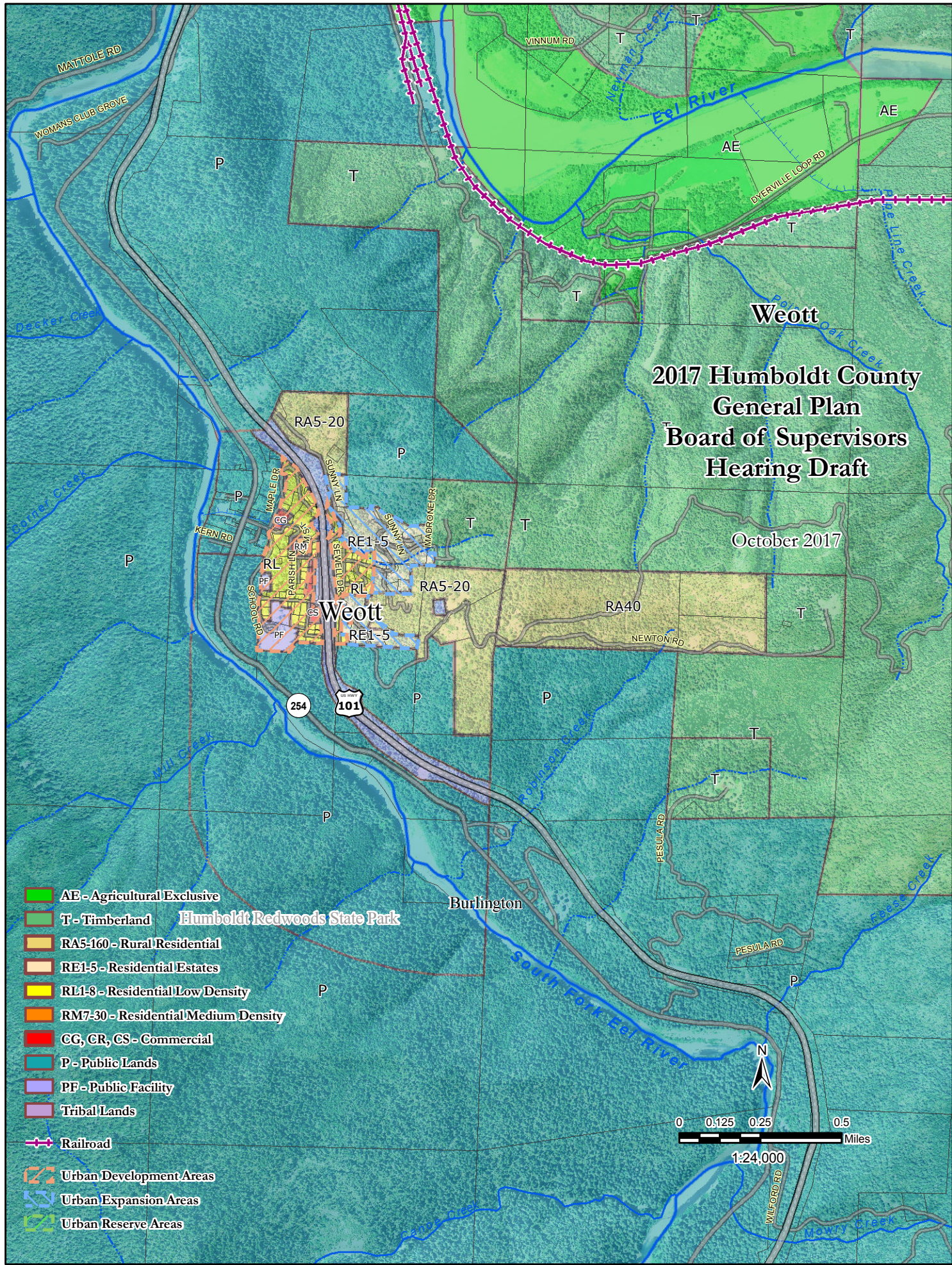


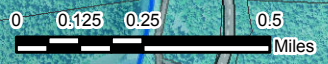
**2017 Humboldt County  
General Plan  
Board of Supervisors  
Hearing Draft**

October 2017



- AE - Agricultural Exclusive
- T - Timberland
- RA5-160 - Rural Residential
- RE1-5 - Residential Estates
- RL1-8 - Residential Low Density
- RM7-30 - Residential Medium Density
- CG, CR, CS - Commercial
- P - Public Lands
- PF - Public Facility
- Tribal Lands

- Urban Development Areas
- Urban Expansion Areas
- Urban Reserve Areas



1:24,000

