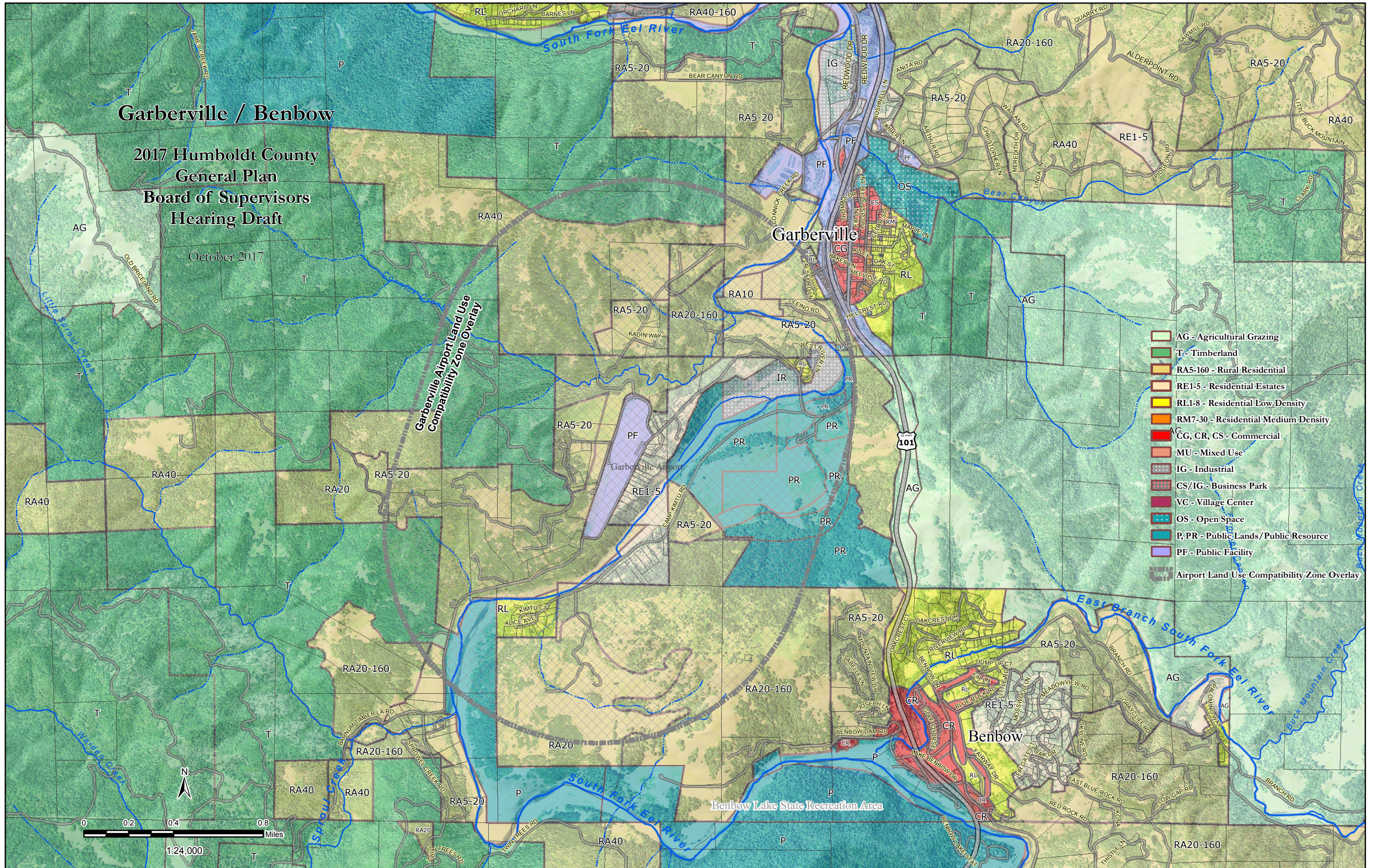


Garberville / Benbow

2017 Humboldt County
General Plan
Board of Supervisors
Hearing Draft

October 2017



- AG - Agricultural Grazing
- T - Timberland
- RA5-160 - Rural Residential
- RE1-5 - Residential Estates
- RL1-8 - Residential Low Density
- RM7-30 - Residential Medium Density
- CG, CR, CS - Commercial
- MU - Mixed Use
- IG - Industrial
- CS/IG - Business Park
- VC - Village Center
- OS - Open Space
- P, PR - Public Lands/Public Resource
- PF - Public Facility
- Airport Land Use Compatibility Zone Overlay

