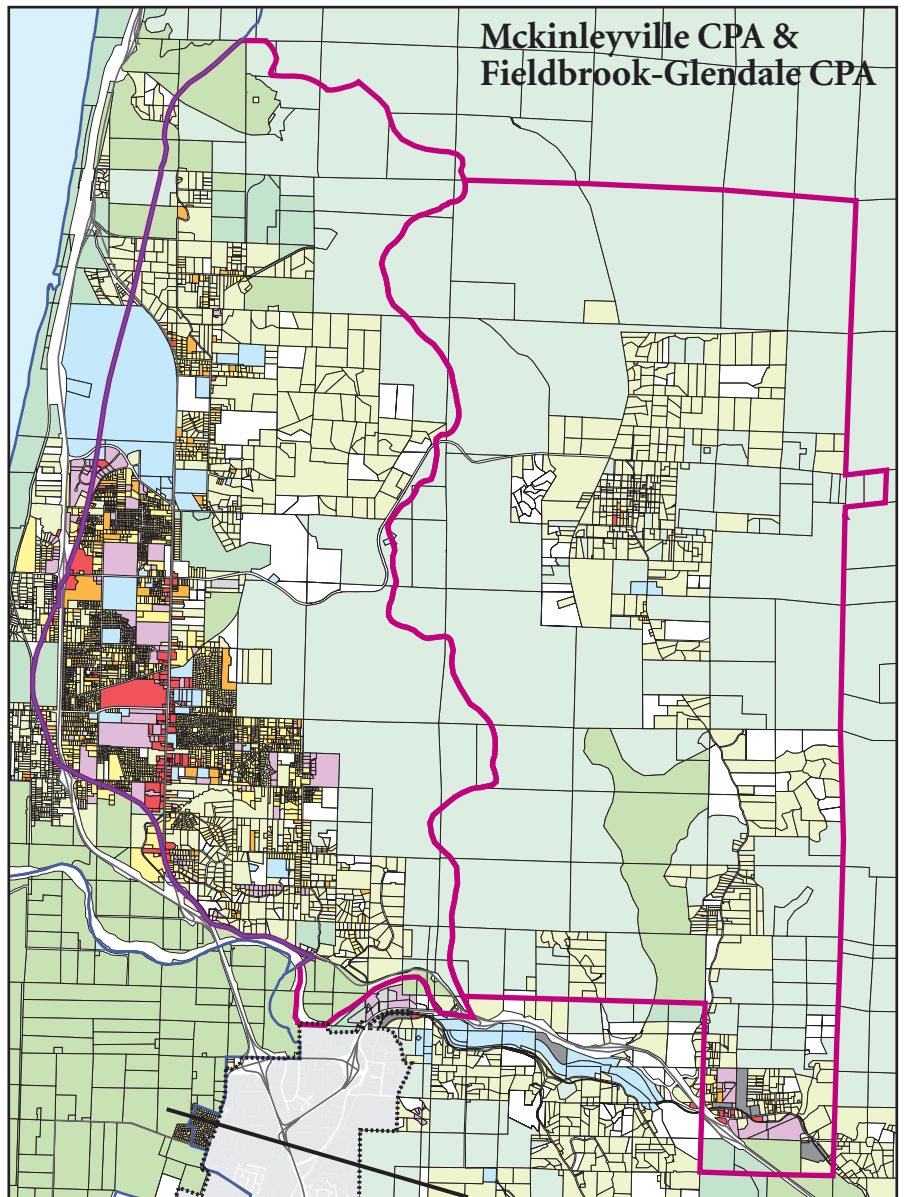
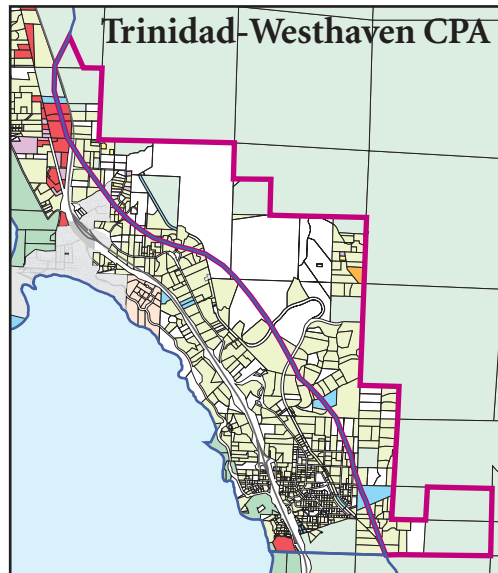
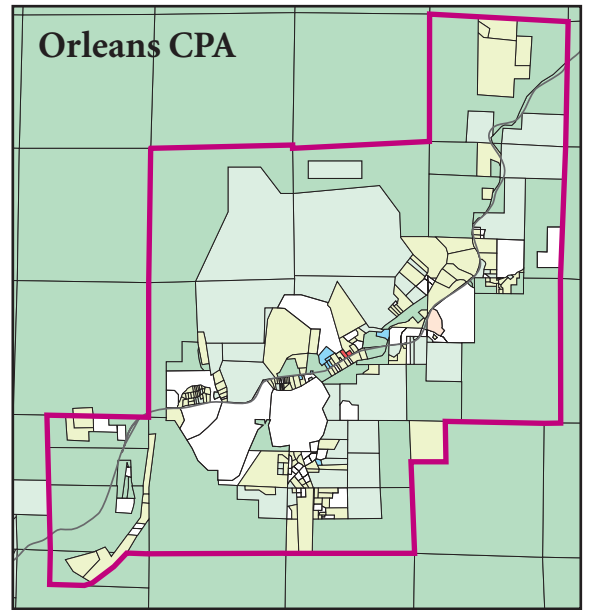
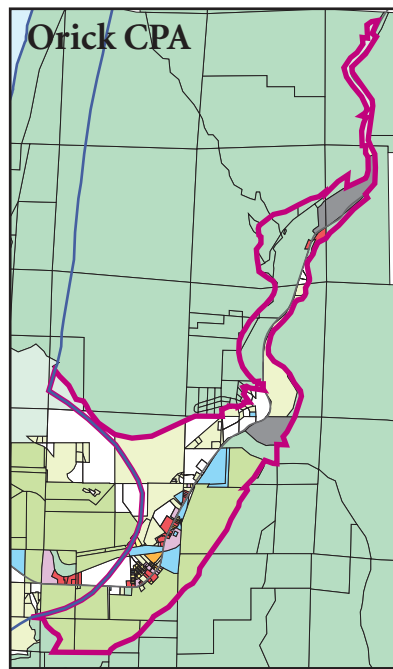
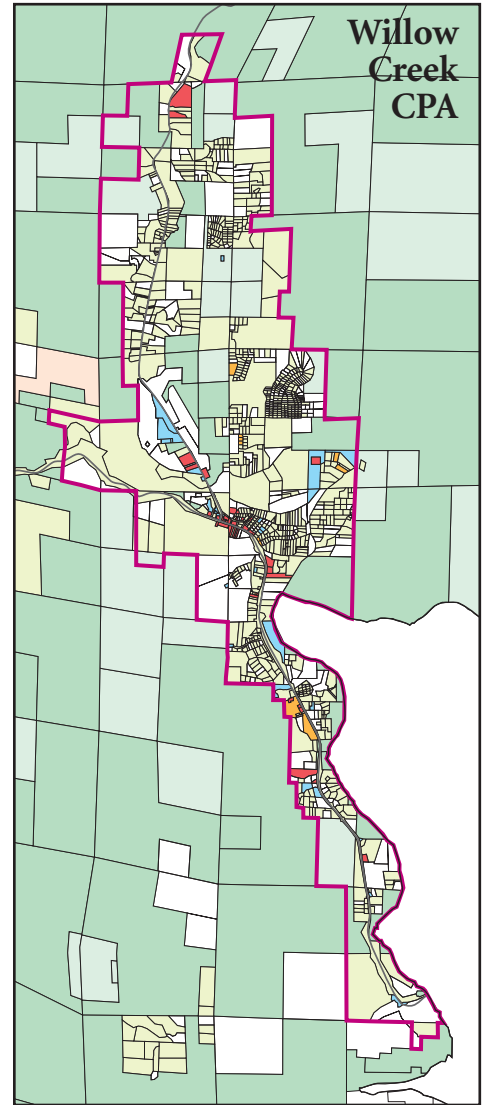
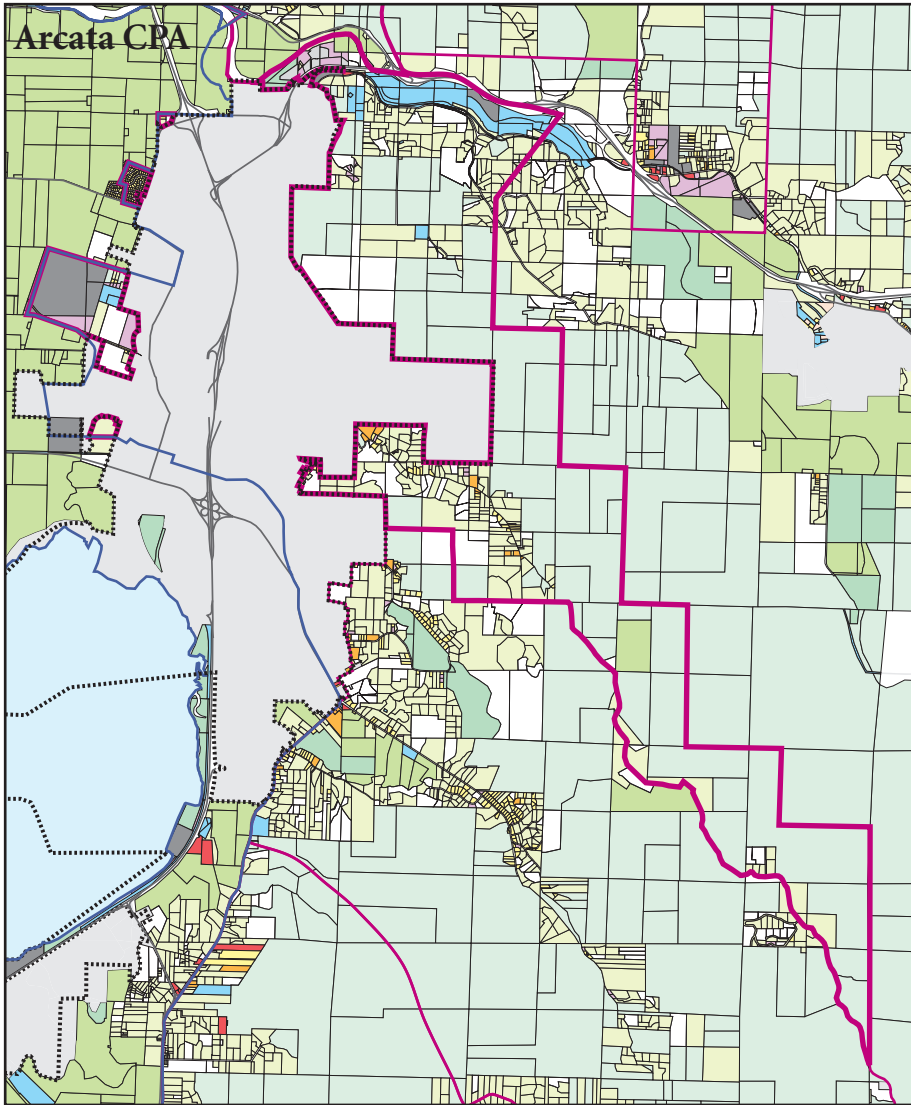
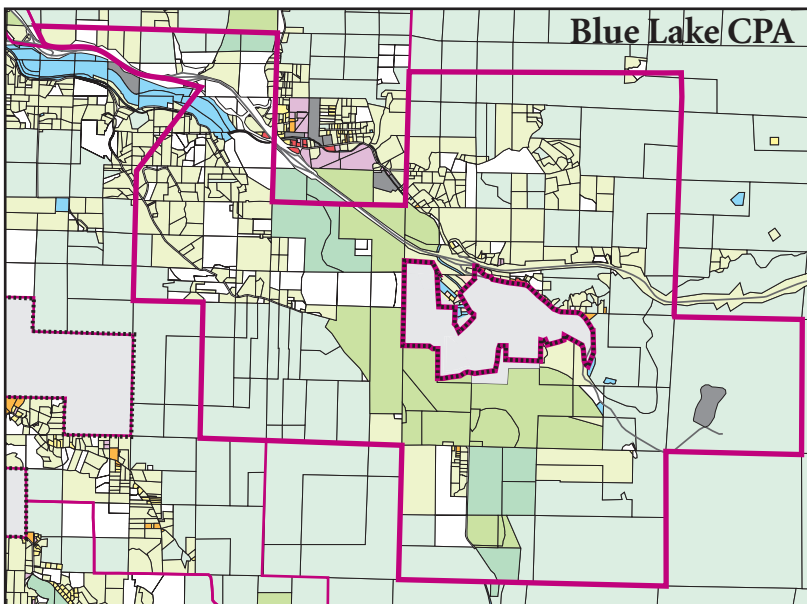


Figure 4-1b  
Existing Land Use in Community  
Planning Areas





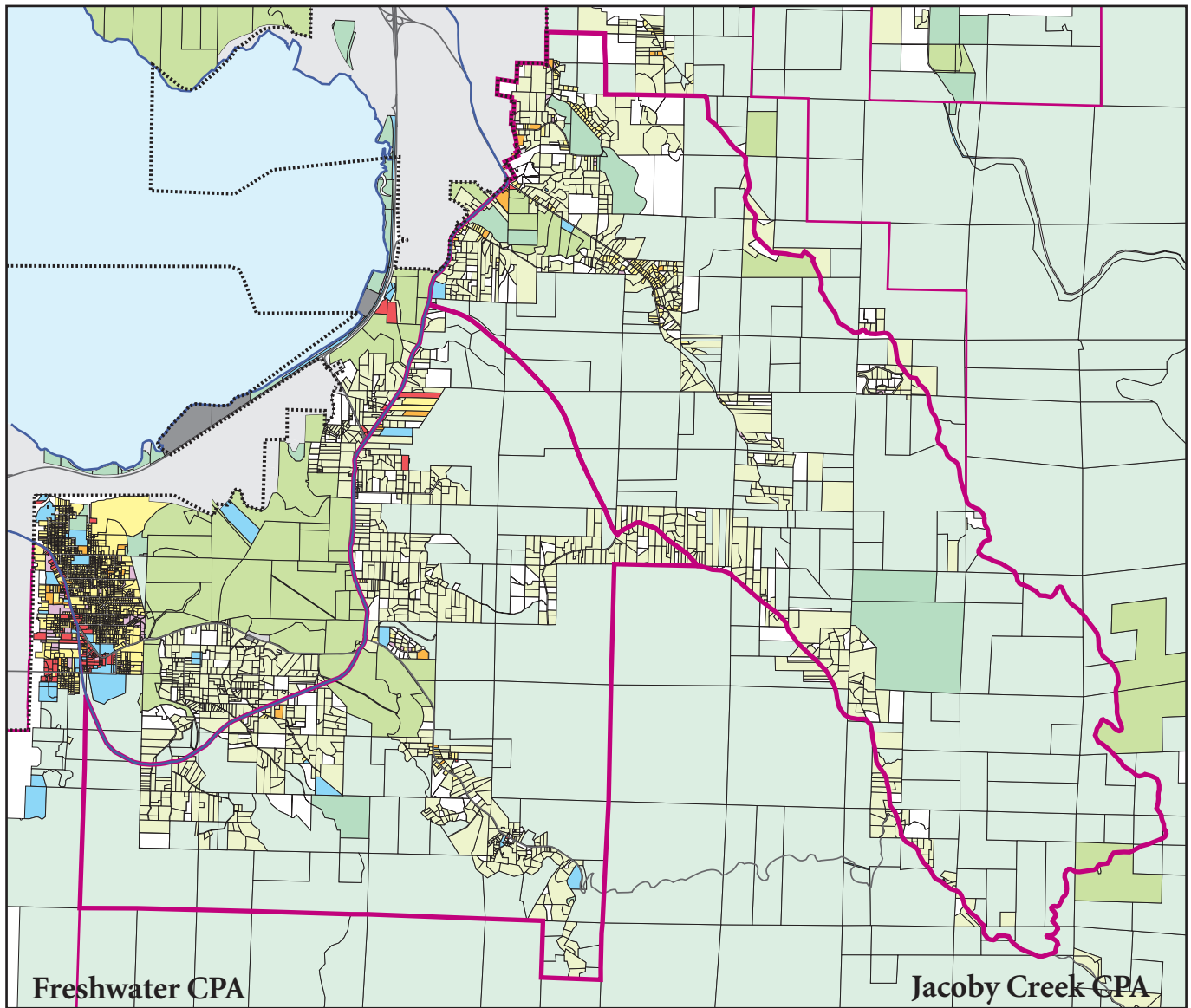
Source: Humboldt County GIS; Dyett & Bhatia



- Rural Residential
- Single-family Residential
- Multi-family Residential
- Commercial
- Heavy Industry
- Light Industry
- Agriculture
- Timber
- Parks/Open Space
- Tribal Land
- Other Public Land
- Vacant Urban Land
- Other Vacant/ Unclassified Land
- Incorporated City
- Coastal Zone

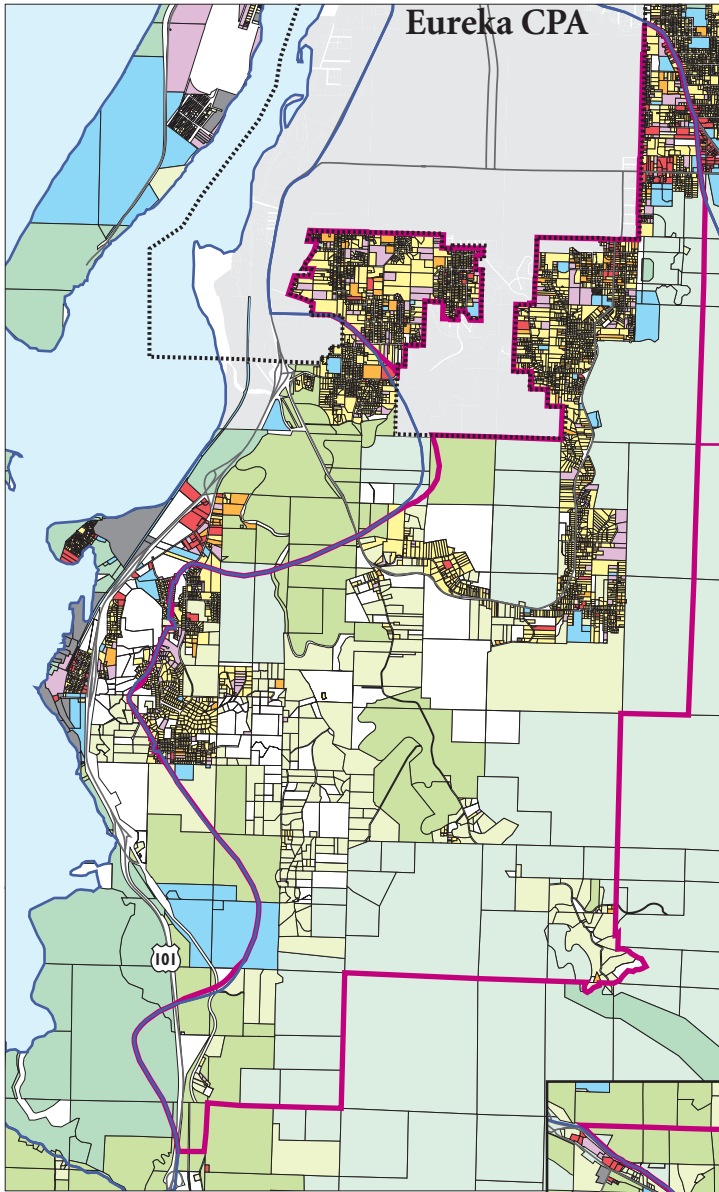
Figure 4-1b

# Existing Land Use in Community Planning Areas

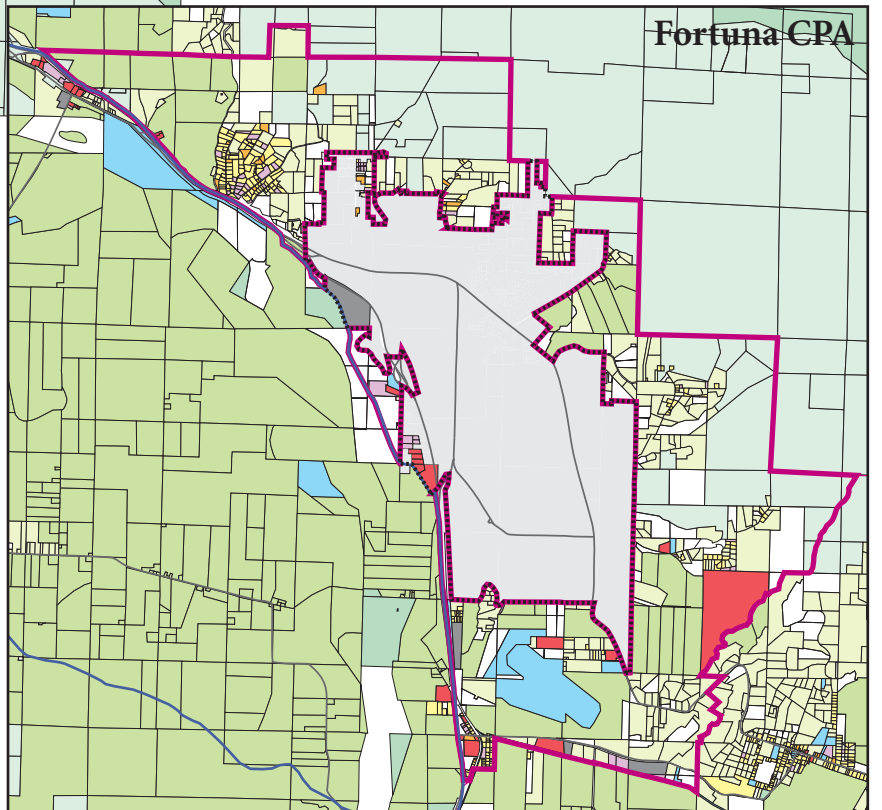


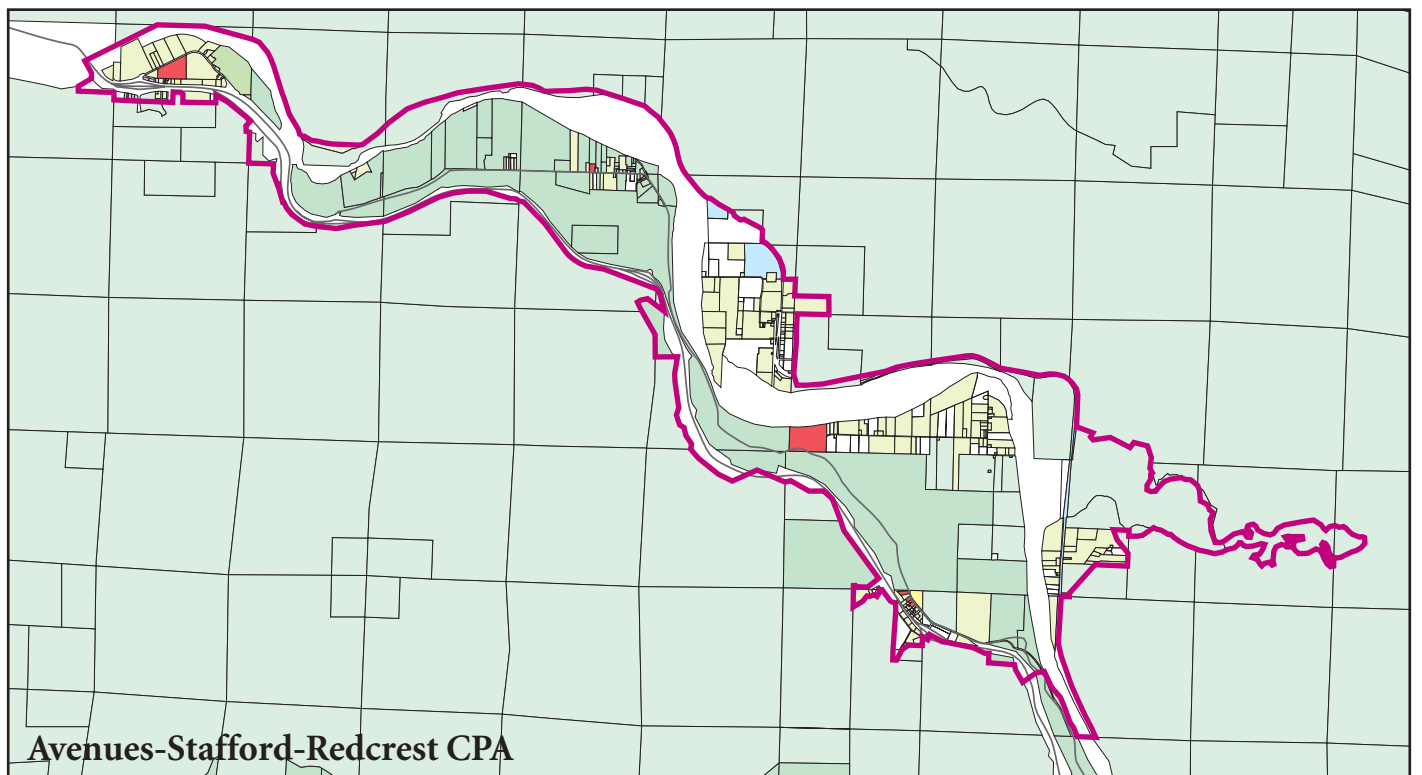
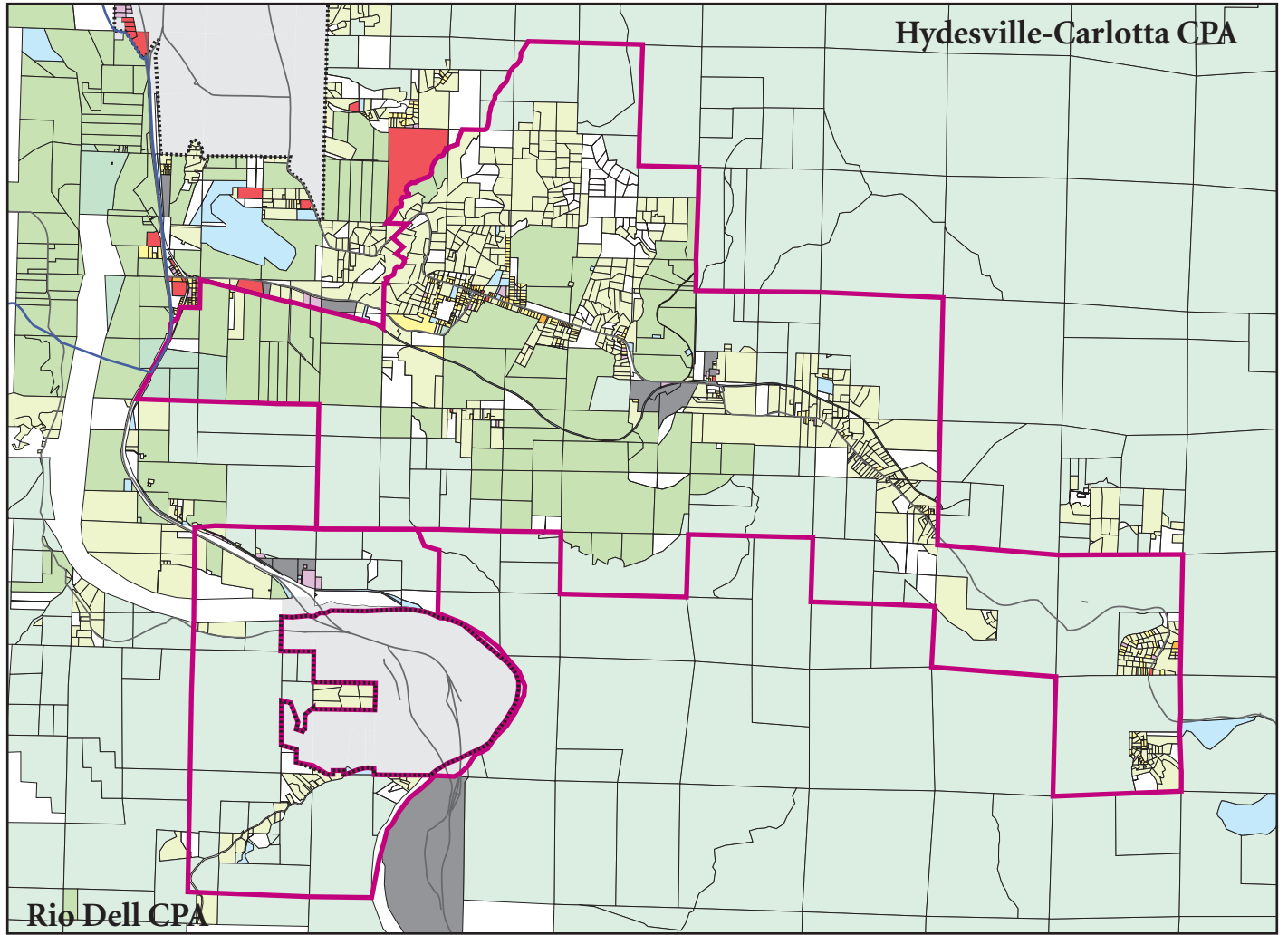
Source: Humboldt County GIS; Dyett & Bhatia



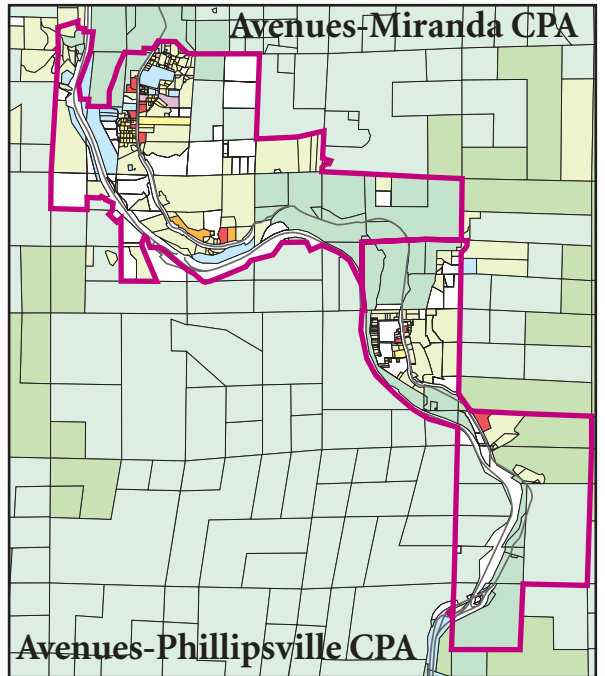
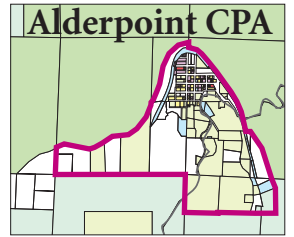
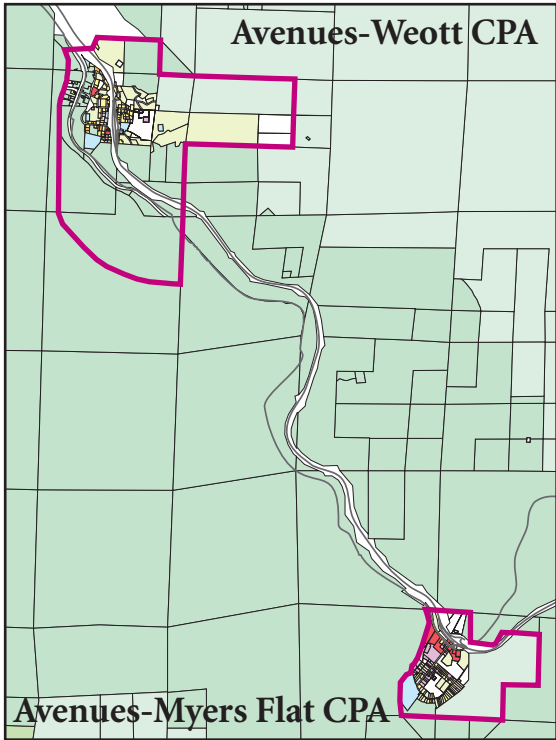


- Rural Residential
- Single-family Residential
- Multi-family Residential
- Commercial
- Heavy Industry
- Light Industry
- Agriculture
- Timber
- Parks/Open Space
- Tribal Land
- Other Public Land
- Vacant Urban Land
- Other Vacant/ Unclassified Land
- Incorporated City
- Coastal Zone





Source: Humboldt County GIS; Dyett & Bhatia



- Rural Residential
- Single-family Residential
- Multi-family Residential
- Commercial
- Heavy Industry
- Light Industry
- Agriculture
- Timber
- Parks/Open Space
- Tribal Land
- Other Public Land
- Vacant Urban Land
- Other Vacant/ Unclassified Land
- Incorporated City
- Coastal Zone

